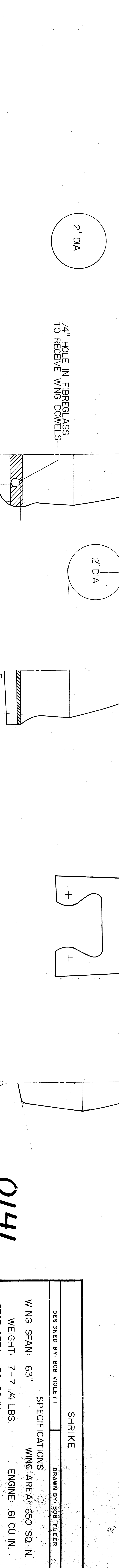
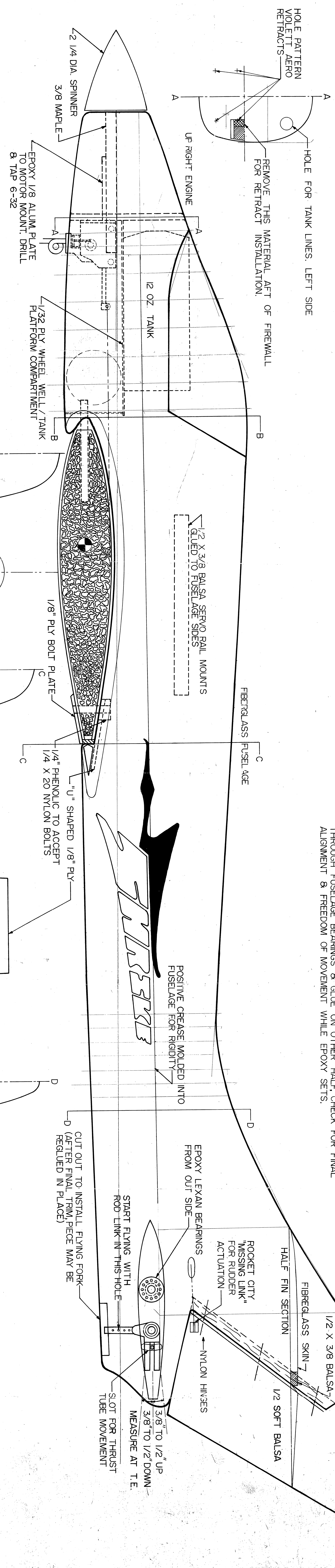


NOTE: FINISH ALL WOOD SURFACES COVERED WITH K & B 3/4 OZ. FIBREGLASS GLOTH WITH 2 THINNED COATS OF SURFACING RESIN, K & B EPOXY PRIMER & SUPER POXY FOR FINAL COATS OF COLOR.

NOTE: ALL FORCE SET-UPS ARE ZERO-ZERO FLYING STAB TRIM IS CONTROLLED AT TRANSMITTER.

NOTE: CAREFUL ATTENTION MUST BE PLACED UPON ACCURATE ALIGNMENT OF STAB HALFS WHEN BONDING TO PIVOT & THRUST TUBES. STAB ASSEMBLY OUTSIDE OF FUSELAGE WILL ASSIST IN OBTAINING WATCHED TRAILING & LEADING EDGES OF THE TWO HALFS. THEN GLE TUBES IN ONE HALF OF STAB, SLIDE THROUGH FUSELAGE BEARINGS & GLE ON OTHER HALF. CHECK FOR FINAL ALIGNMENT & FREEDOM OF MOVEMENT WHILE EPOXY SETS.

NOTE: SEE FLYING FORK INSTRUCTIONS IF REMOVABLE STAB IS DESIRED



0141

DESIGNED BY: BOB VIOLETT		DRAWN BY: BOB FLEER	
SHRIKE			
SPECIFICATIONS			
WING SPAN:	63"	WING AREA:	650 SQ. IN.
WEIGHT:	7-7 1/4 LBS.	ENGINE:	.61 CU. IN.
STAB AREA:	150 SQ. IN.		